

MONTHLY MEMBERSHIP PROGRESS REPORT

District 23 A

Results as of: 4/30/2024

GMT:

LOCATION CONNECTICUT

GMT CA

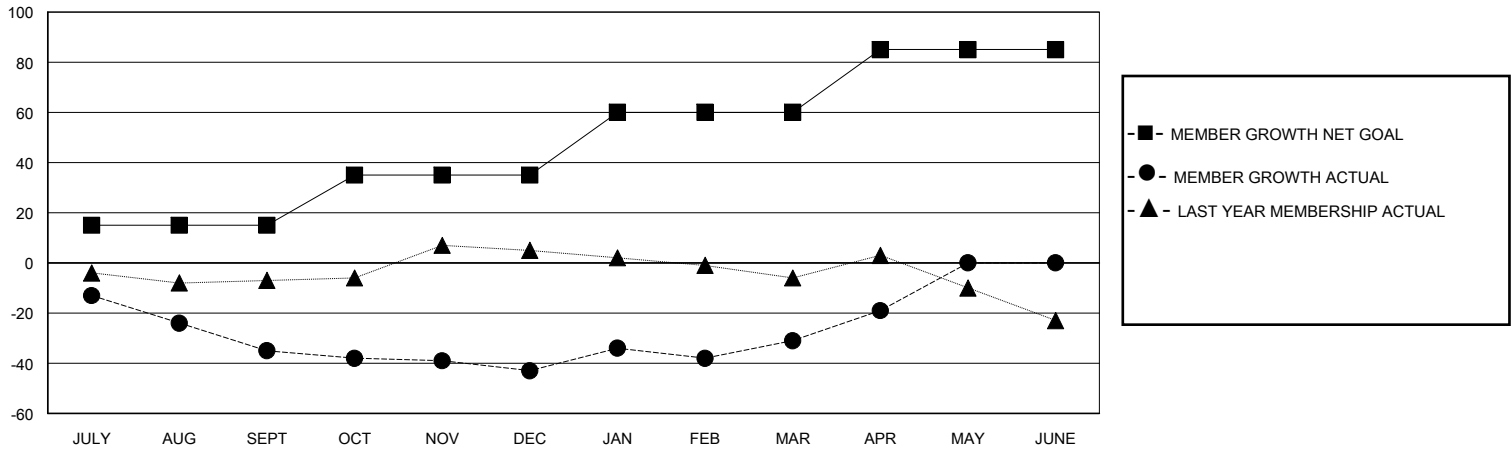
Clubs			
RESULTS FOR 2023-2024			
QUARTER	NEW CLUB GOAL	NEW CLUBS	DROPPED CLUBS
JULY/AUG/SEPT	0	0	1
OCT/NOV/DEC	0	0	0
JAN/FEB/MAR	1	0	0
APR/MAY/JUNE	0	0	0

Members			
RESULTS FOR 2023-2024			
QUARTER	MEMBER GROWTH NET GOAL	MEMBER GROWTH ACTUAL	DROPPED MEMBERS ACTUAL (including transfers)
JULY/AUG/SEPT	15	26	57
OCT/NOV/DEC	20	42	47
JAN/FEB/MAR	25	34	20
APR/MAY/JUNE	25	16	3

GOALS AND ACTUAL NEW CLUBS CUMULATIVE



GOALS AND ACTUAL MEMBERS CUMULATIVE



DROPPED CLUBS: 1

30 CLUBS OF 47 ADDED 1 OR MORE NEW MEMBERS

GENDER DISTRIBUTION

MALE 776 (61.83%)
FEMALE 479 (38.17%)

DROPPED MEMBERS

DECEASED	16
CLUB CANCELLED	0
OTHER	111
TOTAL	127

[CLICK HERE FOR CUMULATIVE MEMBERSHIP DATA](#)

TOTAL FAMILY UNIT MEMBERS	180
FAMILY MEMBERS PAYING HALF DUES	93